

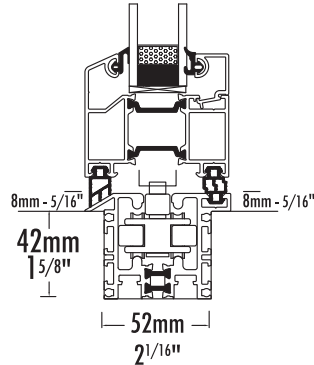


# THRESHOLD OPTIONS (Bi-fold Doors)

We offer nine weatherproof threshold options for Bi-fold Doors, satisfying all applications and current building regulations.

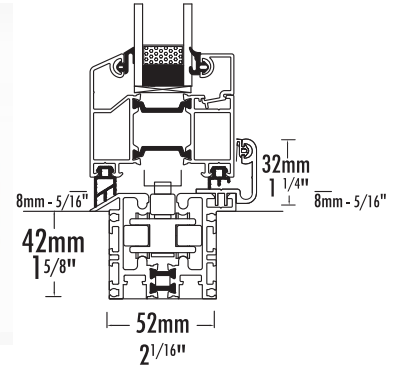
## 1. FLUSH TRACK

**Fitted as standard, wheelchair friendly.** This options gives you a flush floor level/seamless transition from the inside of the property to the outside of the property. In the UK this option is certified as 'Part M disabled access to buildings' compliant, and ADA compliant in the US.



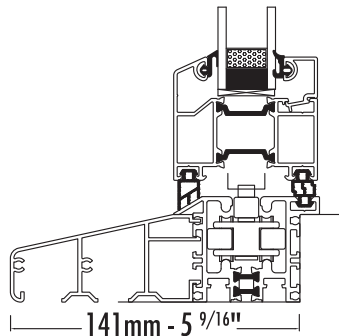
## 2. FLUSH TRACK WITH REBATE

**For added weather proofing properties.** Advised for areas subject to adverse weather conditions, such as coastal and hurricane prone areas. The addition of the aluminium rebate is located to bridge the bottom weather seal to give increased weather proofing properties to your door set.



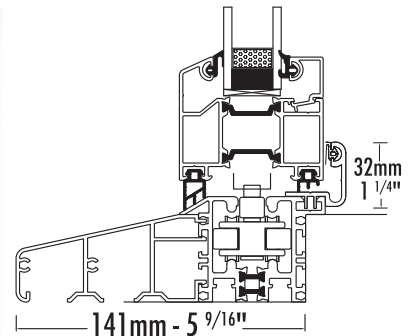
## 3. FLUSH TRACK WITH CILL

This option offers a step down out of your property with no trip hazard, and with a cill to drain water away from the doors.



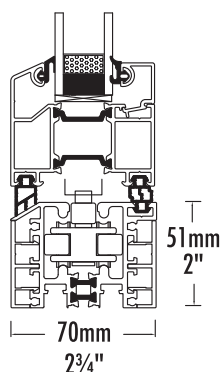
## 4. FLUSH TRACK WITH CILL AND REBATE

**This option offers a step down out of your property, and with a cill to drain water away from the doors.** The addition of the aluminium rebate is located to bridge the bottom weather seal to give increased weather proofing properties to your door set.



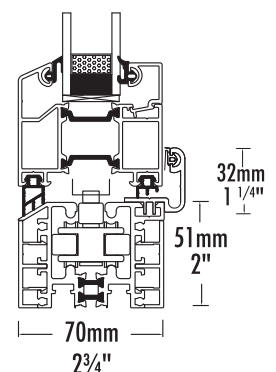
## 5. RAISED TRACK

**Requires user to step over the threshold.** This option requires the user to step over the threshold, this does not give you a flush floor level from the inside of the property to the outside of the property. The aluminium track itself is the same as the flush option, only it is not sank under the floor level on installation.



## 6. RAISED TRACK WITH REBATE

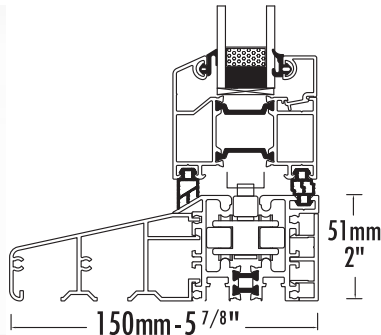
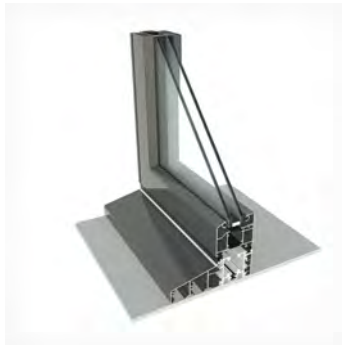
**Added weather proofing properties for raised track.** This option requires the user to step over the threshold, this does not give you a flush floor level from the inside of the property to the outside of the property. The aluminium track itself is the same as the flush option, only it is not sank under the floor level on installation. The addition of the aluminium rebate is located to bridge the bottom weather seal to give increased weather proofing properties to your door set.



# THRESHOLD OPTIONS (Bi-fold Doors) continued ..

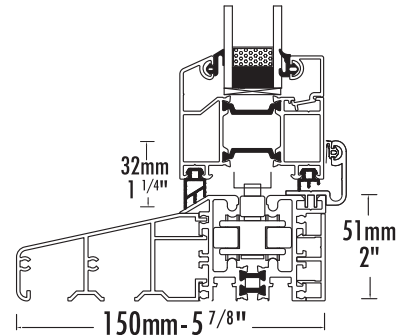
## 7. RAISED TRACK WITH CILL

This option offers a step down out of your property, with a cill to drain water away from the doors.



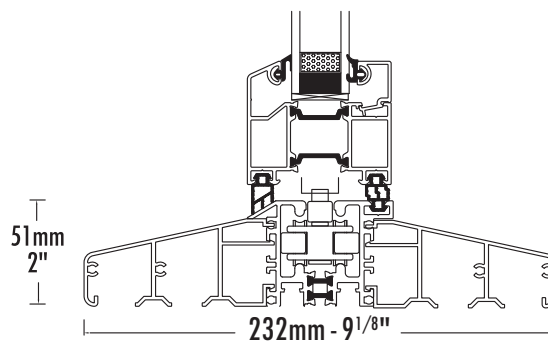
## 8. RAISED TRACK WITH CILL AND REBATE

This option offers a step down out of your property, with a cill to drain water away from the doors. The addition of the aluminium rebate is located to bridge the bottom weather seal to give increased weather proofing properties to your door set.



## 9. RAISED TRACK WITH DOUBLE CILL

Available with or without Rebate. A situation may occur where a double cill is required and it is impractical to sink the track below surface level, this option offers a small ramp style, where the user can step or wheel over the cill and tracks.



## NOTES

- **THE MANUFACTURE SIZE OF OUR BI-FOLD DOORS INCLUDE THE CHOSEN TRACK OPTION (less determined fitting tolerances)**
- **All threshold options are as either inward or outward opening. If rebate fitted, this would be moved accordingly**
- **All thresholds are constructed from extremely strong aluminium profile and includes a thermal break/barrier and available in a choice of two colours: anodised silver (standard) and bronze**
- **If rebate fitted (to satisfy Approved Document Q), this is finished to match the chosen frame colour**
- **All cills and track covers are finished to match the chosen frame colour**
- **Our Cills are 150mm front to back dimension, with a projection of 90mm from track (80mm from front of door profile)**

CAD illustrations show our AA72 aluminium bi-fold door profile and track detail.

For the latest up to date information please visit; <https://www.foldingslidingdoors.com/products/features/threshold-options>

Further information on Track Detail /CAD drawings can be found on our Resources page; <https://www.foldingslidingdoors.com/online/resources>

Rev: June 22